

# HAPPY

[illegible]

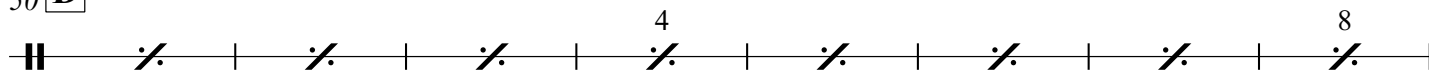
Example 18 is a musical score for a single staff. It begins with a double bar line and a box containing the letter 'B'. The first measure contains a quarter note, followed by a quarter rest, a quarter note, a quarter rest, and a quarter note. The second measure contains a quarter rest, a quarter note, a quarter rest, and a quarter note. The third measure contains a quarter rest, a quarter note, a quarter rest, and a quarter note. The fourth measure contains a quarter rest, a quarter note, a quarter rest, and a quarter note. The fifth measure contains a quarter rest, a quarter note, a quarter rest, and a quarter note. The sixth measure contains a quarter rest, a quarter note, a quarter rest, and a quarter note. The seventh measure contains a quarter rest, a quarter note, a quarter rest, and a quarter note. The eighth measure contains a quarter rest, a quarter note, a quarter rest, and a quarter note. The ninth measure contains a quarter rest, a quarter note, a quarter rest, and a quarter note. The tenth measure contains a quarter rest, a quarter note, a quarter rest, and a quarter note. The eleventh measure contains a quarter rest, a quarter note, a quarter rest, and a quarter note. The twelfth measure contains a quarter rest, a quarter note, a quarter rest, and a quarter note. The thirteenth measure contains a quarter rest, a quarter note, a quarter rest, and a quarter note. The fourteenth measure contains a quarter rest, a quarter note, a quarter rest, and a quarter note. The fifteenth measure contains a quarter rest, a quarter note, a quarter rest, and a quarter note. The sixteenth measure contains a quarter rest, a quarter note, a quarter rest, and a quarter note. The seventeenth measure contains a quarter rest, a quarter note, a quarter rest, and a quarter note. The eighteenth measure contains a quarter rest, a quarter note, a quarter rest, and a quarter note. The nineteenth measure contains a quarter rest, a quarter note, a quarter rest, and a quarter note. The twentieth measure contains a quarter rest, a quarter note, a quarter rest, and a quarter note. The score ends with a double bar line.

34 C

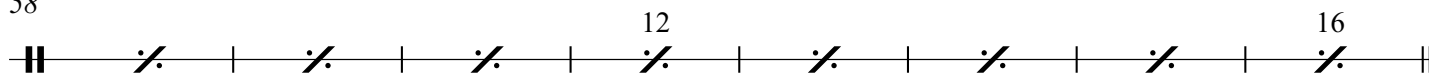
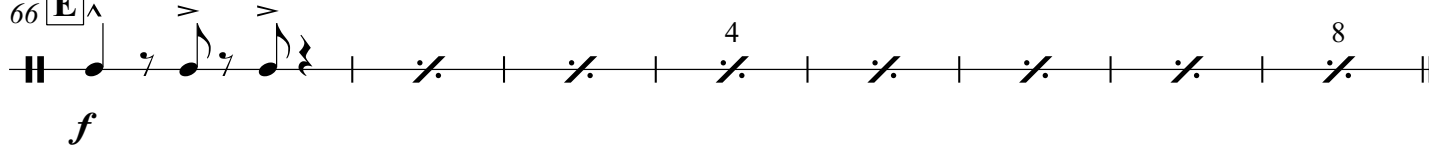
4 8

42

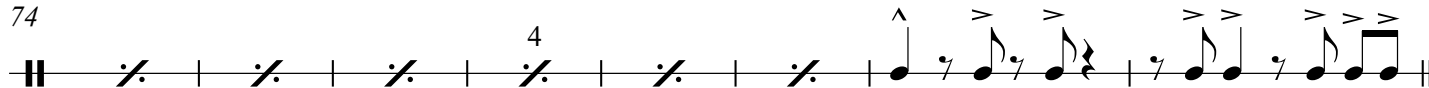
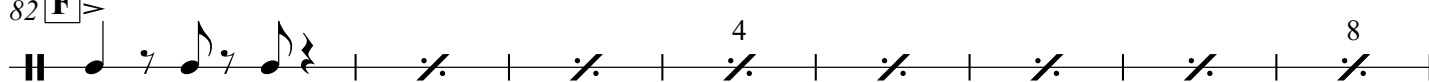
12 16

50 **D**

58

66 **E**

74

82 **F**

90

